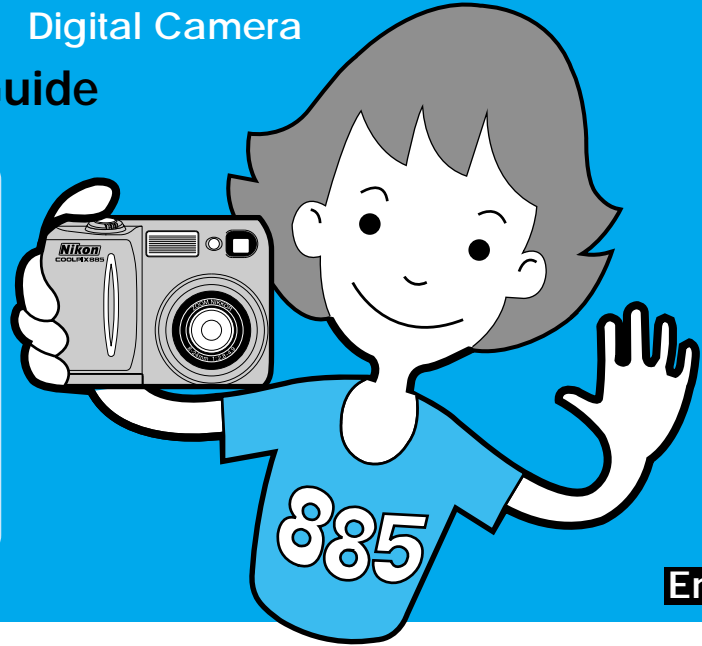


Nikon COOLPIX885

Digital Camera

Quick Start Guide

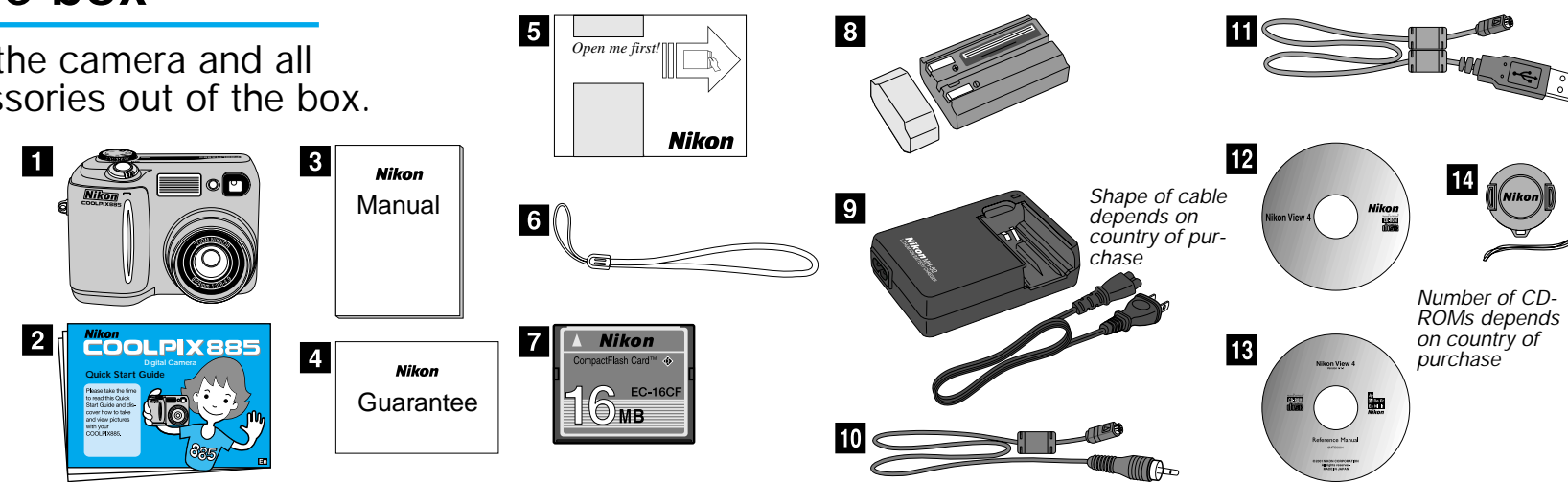
Please take the time to read this Quick Start Guide and discover how to take and view pictures with your COOLPIX885.



En

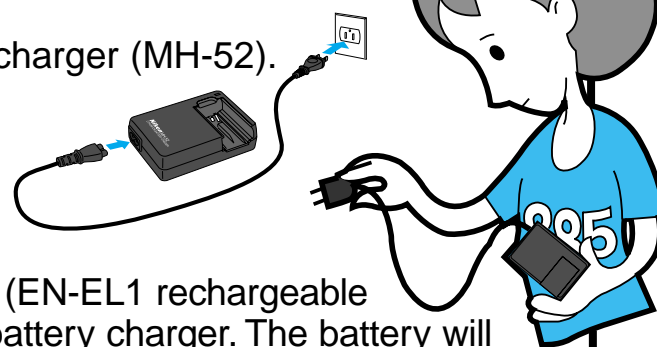
Step 1 Taking the camera out of the box

1 Take the camera and all accessories out of the box.

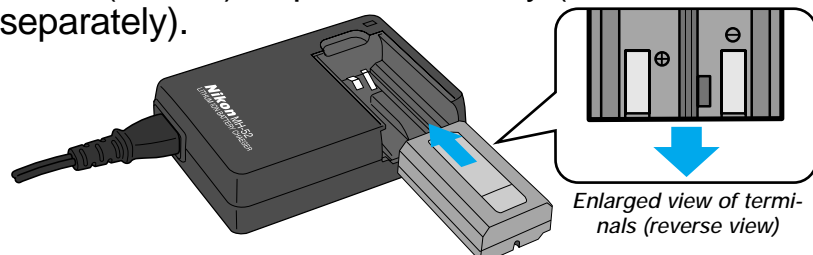


Step 2 Charging the rechargeable battery

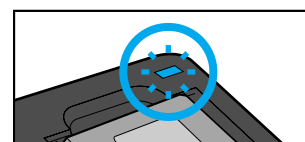
1 Plug the battery charger (MH-52).



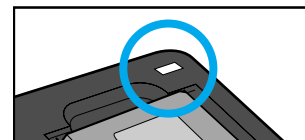
2 Insert the battery (EN-EL1 rechargeable battery) into the battery charger. The battery will begin charging immediately. It takes approximately 2 hours to recharge the battery. Note that the camera can also be used immediately with a 2CR5 (DL245) disposable battery (Available separately).



3 The red lamp on the charger glows steadily to indicate that the battery is charging.



4 The red lamp switches off when the battery is fully charged.



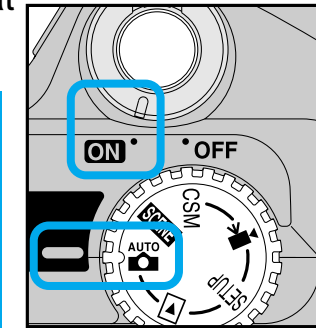
5 Take out the battery and unplug the battery charger.

Check that you have all of the items listed below:

- 1 COOLPIX885 Camera
- 2 Quick Start Guide (This Guide)
- 3 Instruction Manual
- 4 Guarantee
- 5 "Open me first!" Envelope
- 6 Camera Strap
- 7 CompactFlash™ Memory Card (Memory card for recording your pictures)
- 8 Battery (EN-EL1 Rechargeable), with terminal cover
- 9 Battery Charger (MH-52)
- 10 Video Cable (For connecting your camera to your TV/VCR)
- 11 USB Interface Cable (For connecting your camera to your computer)
- 12 Nikon View 4 CD-ROM
- 13 Nikon View 4 Reference Manual CD-ROM
- 14 Lens Cap

Step 4 Taking Pictures

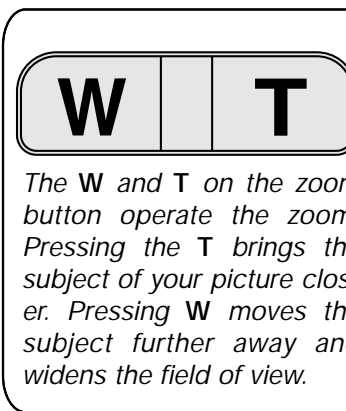
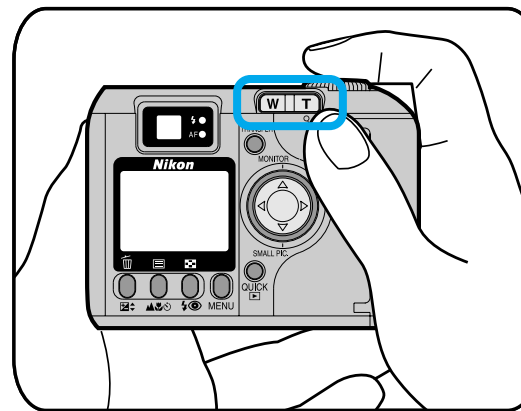
1 Turn the dial on the top of the camera to the position indicated by the **AUTO** icon. Check that the camera is **ON**.



NOTE

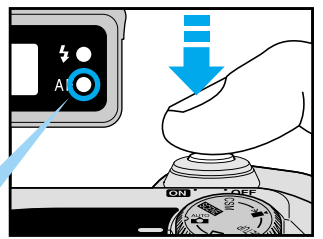
When you first use your COOLPIX885, the date and time will not be set. Setting the date and time allows you to record exactly when you took your pictures. For further details refer to page 52 of the Instruction Manual.

2 Compose the picture using the viewfinder, or monitor on the back of the camera.



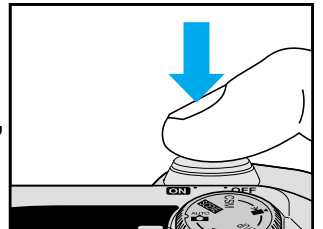
The **W** and **T** on the zoom button operate the zoom. Pressing the **T** brings the subject of your picture closer. Pressing **W** moves the subject further away and widens the field of view.

3 Frame the subject in the middle of the picture using the viewfinder or the monitor and press the shutter release button half-way down to check whether the subject is in focus.



If the subject is in focus, the green light on the right of the viewfinder will glow steadily.

4 Without removing your finger from the shutter release button, press the button all the way down to take your picture.

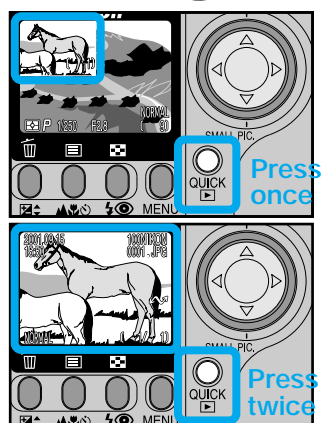
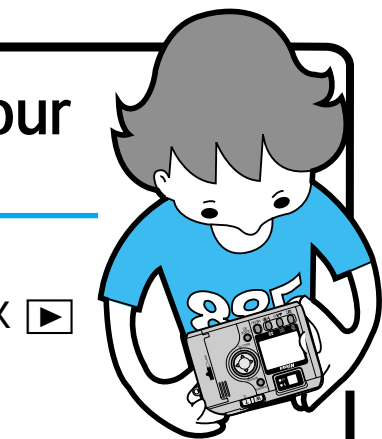


There are two ways of pressing the shutter release button. Pressing the button halfway down allows you to check whether your subject is in focus. Press the shutter release button all the way down to take your picture.

Step 5 Checking your Picture

You can review the pictures you have taken by pressing the QUICK button.

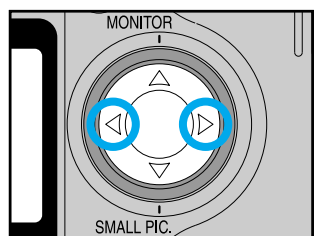
1 Press the QUICK button twice. The button is on the right of the monitor.



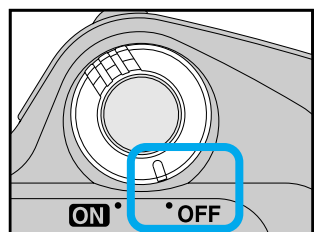
If you press the QUICK button just once then a small version of your picture (thumbnail) will be displayed in the top left of the monitor. Press the QUICK button a second time to change from the thumbnail to the full-size picture.

2 The picture which you have just taken will be displayed in the monitor.

3 Press **◀** on the Multi selector to cycle through all the pictures that you have taken. Press **▶** on the Multi selector to cycle through in reverse order.

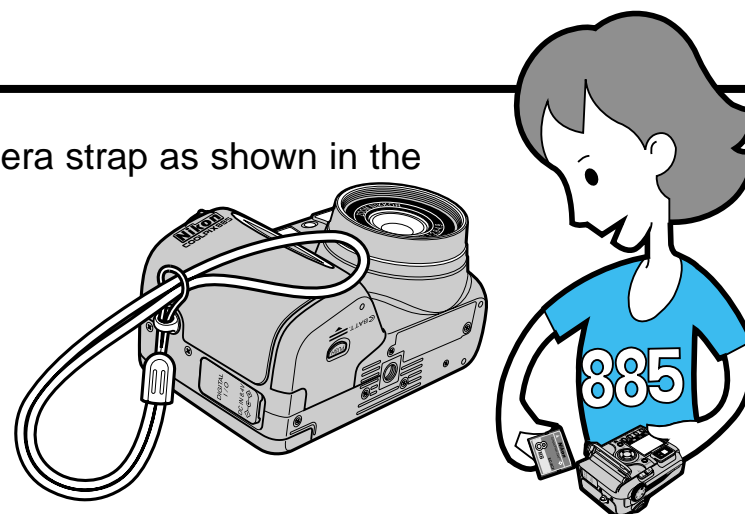


4 If you have finished taking pictures, turn the camera **OFF**. That completes our review of the basic operation of your COOLPIX885.

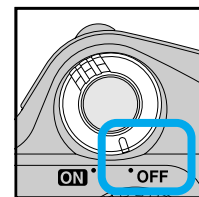


Step 3 Setting up the Camera

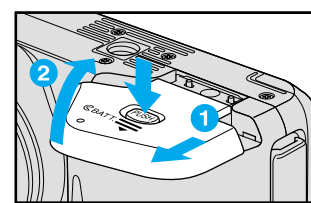
1 Attach the camera strap as shown in the illustration.



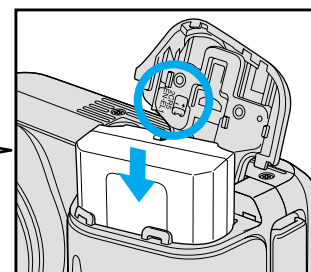
2 Check that the camera is turned **OFF**.



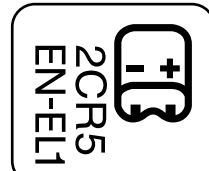
3 Open the battery cover by pressing the battery-chamber cover latch on the bottom of the camera, slide the battery-chamber cover out and flip it open.



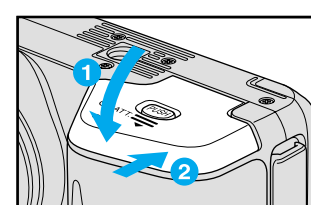
4 Insert the battery into the camera as shown.



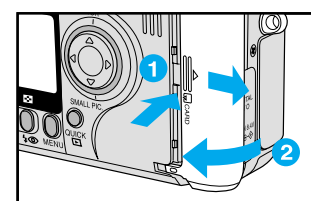
Be careful to insert the battery the correct way around following the indication on the back of the cover.



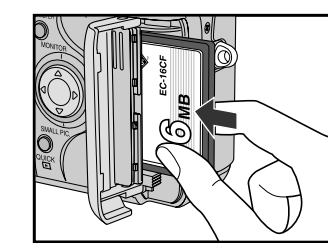
5 After inserting the battery, close the cover to push the battery down, hold the cover shut, and slide it to the closed position.



6 Open the memory card slot cover on the side of the camera as shown right.



7 Insert the memory card into the slot.



Insert the card into the slot with the Nikon CompactFlash™ label towards the rear side of the camera.

8 After inserting the memory card and making sure that it is properly seated, close the slot cover.

9 Switch the camera **ON**, and check the battery level in the monitor.

NOTE

The memory card included with your COOLPIX885 is ready for use. Please note that you will usually have to format a memory card before using it for the first time. Refer to page 48 of the Instruction Manual for further details.

The battery level icon is displayed in the top right corner of the monitor.

- **No icon:** The battery is sufficiently charged.
- **Low battery icon:** The battery is running low and should be exchanged soon.
- **WARNING!! BATTERY EXHAUSTED:** The battery is exhausted and must be replaced with a fully charged (or new) battery before the camera can be used.

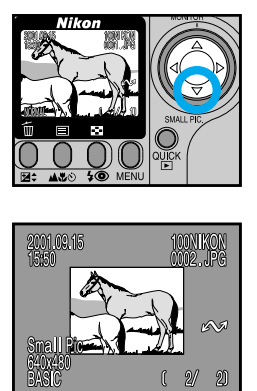
Note that only the Nikon EN-EL1 rechargeable battery included with the camera can be inserted into the battery charger. 2CR5 (DL245) lithium batteries can be used with the COOLPIX885, but they are not rechargeable.



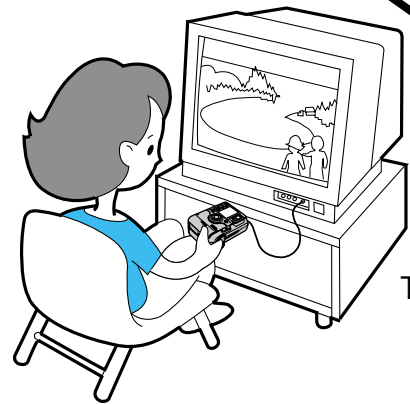
Create Small Picture

To create small picture file for e-mail and the Web while keeping the original picture file as it is, press the **SMALL PIC.** button (▼ on the Multi selector) while a picture is displayed full-screen on the monitor. See page 75 on the Instruction Manual for details.

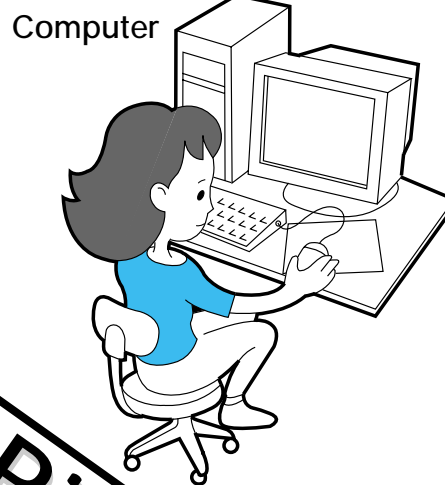
Follow the instructions on Step 5 to confirm the small picture image.



Viewing Your Pictures



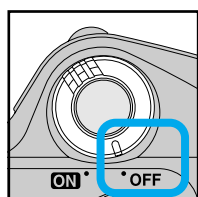
TV/VCR



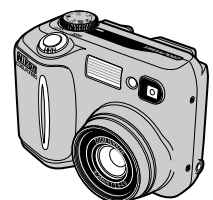
Computer

Viewing your pictures on a television screen

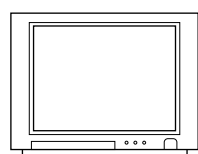
- 1 Turn the camera OFF.



- 2 Use the video cable included with the camera to connect the camera to the television as shown in the illustration.



Make sure you connect the black plug to the camera, and the yellow plug to the Video-In socket on the television.



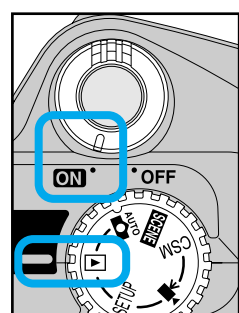
- 3 Insert a memory card containing image data into the camera. (To insert the memory card, refer to Steps 3.6, 3.7 and 3.8 on the front side of this Quick Start Guide.)

- 4 Switch your television to the video channel.

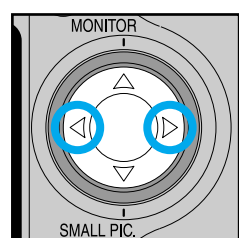
For information on how to switch the television to the video channel, see the manual provided with the television.

- 5 Turn the camera mode dial to and turn the camera ON.

The television will show the picture displayed in the camera monitor.



- 6 When the camera is turned on, the last picture taken will be displayed in the monitor. Press on the Multi selector to cycle through all the pictures that you have taken.



Viewing your pictures on a computer screen

Installing Nikon View 4

To transfer pictures from the camera to the computer using the USB cable provided, it is first necessary to install Nikon View 4.

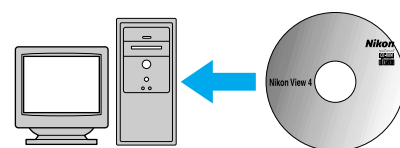
Nikon View 4

Nikon View 4 allows you to use the computer to display pictures recorded on the camera's memory card. Nikon View can also be used to transfer pictures from the memory card to the computer. Nikon View cannot be used to view images after they have been transferred to the computer. To view images stored on the computer, use the image database software included with Nikon View. Refer to the Nikon View 4 Reference Manual CD-ROM for further details.

- 1 Turn on and start up the computer.

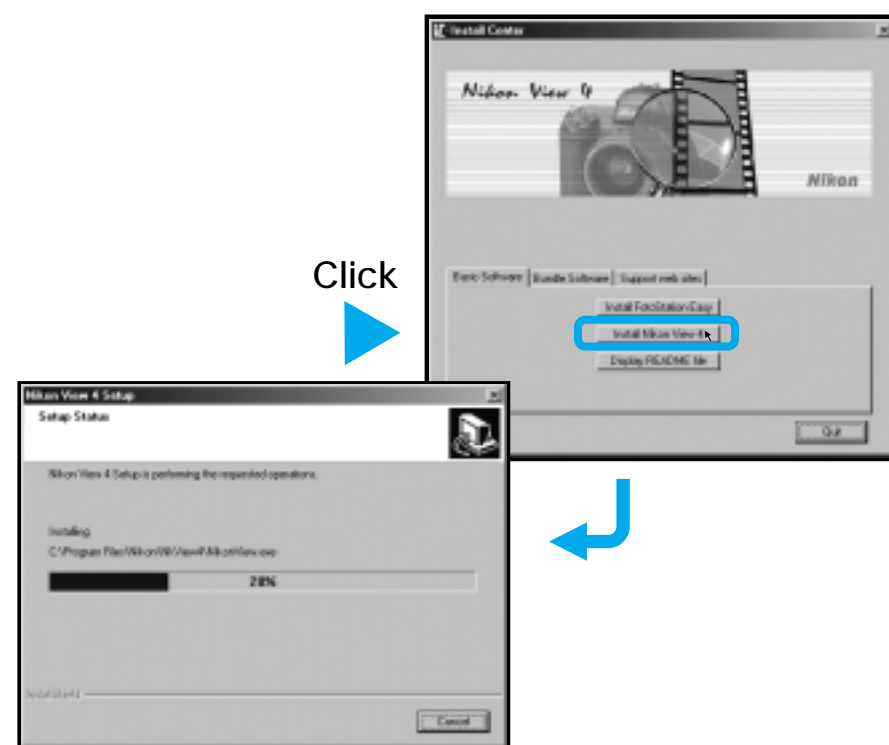
To help keep track of your pictures, install the image database software included with Nikon View 4. Depending on where you purchased your camera, the COOLPIX885 comes with Canto Cumulus (for Windows and Macintosh), iView Media Pro (for Macintosh), or FotoStation Easy (for Windows and Macintosh) image database software. If using Cumulus or iView Media Pro, they should be installed before installing Nikon View 4. If using FotoStation Easy, it should be installed after installing Nikon View 4. Note that Cumulus and iView Media Pro are not supplied to users in Europe. For further details see the Nikon View 4 instruction manual, or the image database software instruction manual.

- 2 Insert the Nikon View 4 CD-ROM into the CD-ROM drive.



- 3 The Install Center welcome window will be displayed on screen.

- 4 Click on the Nikon View 4 button and install Nikon View 4 following the on-screen instructions.

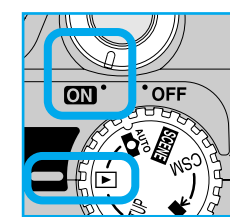


- 5 When the installation is complete, leave the CD-ROM in the CD-ROM drive and restart the computer.

Transferring images to the computer

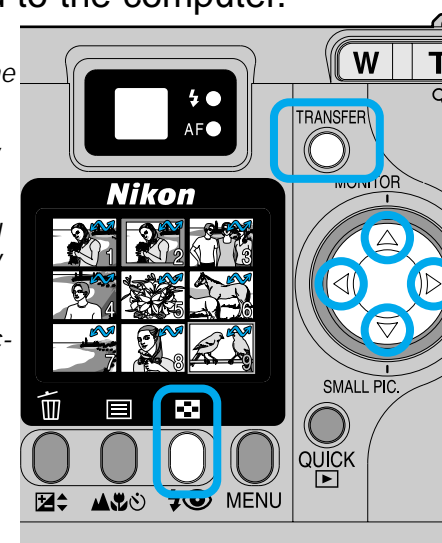
- 1 Insert a memory card containing image data into the camera. (To insert the memory card, refer to Steps 3.6, 3.7 and 3.8 on the front side of this Quick Start Guide.)

- 2 Turn the camera mode dial to and turn the camera ON.

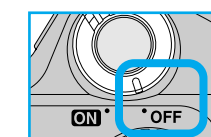


- 3 Use the camera monitor to select and confirm the images to be transferred to the computer.

- Pressing the button allows you to view 9 or 4 pictures in the monitor at the same time (Thumbnail display).
- Images in the thumbnail display can be selected using the Multi selector.
- Images selected for transfer will be marked by the icon. By default, all images will be marked for transfer.
- If the memory card contains pictures that you do not want to transfer to the computer, select the picture and press the TRANSFER button to remove the icon. (Press the TRANSFER button once again to reselect the image.)

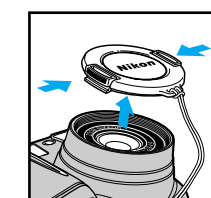


After you have confirmed the images that you wish to transfer to the computer, turn the camera OFF.



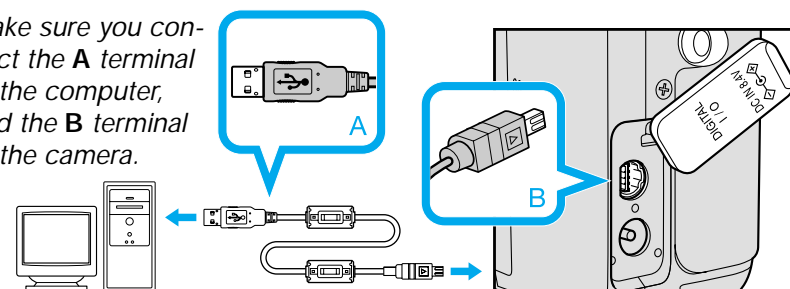
- 4 Remove the camera lens cap.

When the camera is connected to the computer and camera is turned ON, the lens extends out. Make sure to remove the lens cap of the camera before connecting the camera to the computer.



- 5 Turn on and start up the computer, then connect the camera to the computer using the USB interface cable.

Make sure you connect the A terminal to the computer, and the B terminal to the camera.



Installing FotoStation Easy

* FotoStation Easy is only available for customers in Europe. Nikon FotoShare is available depending on country of purchase.

- 1 Click on the Install FotoStation Easy button in the Welcome window and install FotoStation Easy according to the on-screen instructions. Installation of FotoStation Easy includes installation of QuickTime Player.
- 2 Once FotoStation Easy is installed, it will start up automatically whenever Nikon View starts. You can also start FotoStation Easy at any time by clicking on the FotoStation Easy icon (Macintosh) or selecting FotoStation Easy from the Program menu (Windows).

FotoStation Easy

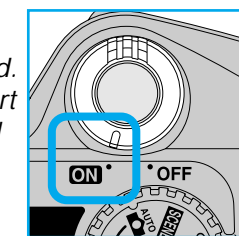
FotoStation Easy is image database software, designed for use together with Nikon View and your COOLPIX camera. While Nikon View allows you to select and transfer pictures from your camera to your computer, FotoStation Easy allows you to organize and view your pictures after they have been transferred to your computer. This is not possible using Nikon View alone. Once FotoStation Easy is installed, images transferred to the computer will automatically be displayed in the FotoStation Easy window. FotoStation Easy allows you to sort your pictures by folder, filename or text label. FotoStation Easy also allows you to enhance and resize your pictures.

FotoShare

If your computer is connected to the internet, you can upload pictures from FotoStation Easy to Nikon FotoShare, Nikon's on-line photo album service. You can register for FotoShare when you first start up FotoStation Easy after installation, or at anytime later using the FotoStation Easy links menu. Refer to the instruction manual provided (which is contained on the CD-ROM) for detailed instructions.

- 6 Turn the camera ON.

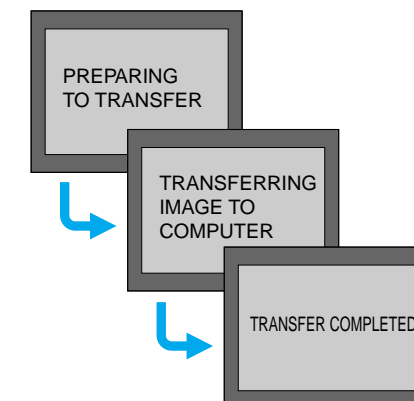
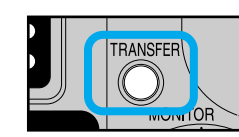
When you turn the camera on, the lens will extend. The monitor will remain blank. Nikon View will start automatically, and the Image Transfer window will be displayed on the computer screen.



If FotoStation Easy has been installed, the FotoStation window will also appear behind Nikon View. If you are using Windows, you must "register" the camera when you first connect the camera to the computer.

- Windows Millennium Edition / Windows 2000**
Registration will take place automatically when the camera is connected to the computer.
- Windows 98 / Windows 98SE**
Follow the on-screen instructions to register the camera. Refer to the Nikon View 4 Reference Manual CD-ROM for further details.

- 7 Press the TRANSFER button on the back of the camera to transfer the selected images to the computer.



- The message PREPARING TO TRANSFER and TRANSFERRING IMAGE TO COMPUTER will be displayed in the camera monitor.
- After a short delay, the message TRANSFER COMPLETED will be displayed in the monitor, indicating that image transfer has been successfully completed.

- 8 The selected images have now been sent from the camera to the computer.

To Exit Nikon View

When you want to exit Nikon View and disconnect the camera from the computer, follow the instruction below before turning the camera off or disconnecting the USB interface cable.

Windows

Exit Nikon View by clicking the button in the top right of the Nikon View window, by selecting Exit from the File menu in the Thumbnail List window, or by clicking the Exit button in the Image Transfer window.

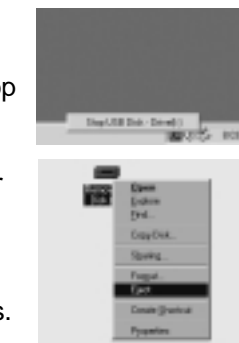
[Windows Millennium Edition / Windows 2000] Click the "Unplug or eject hardware" button and select Stop USB Disk from the menu that appears.

[Windows 98 / Windows 98SE]

Double click the My Computer icon, and right click the removable disk corresponding to the camera. Select Eject from the menu that appears.

Macintosh

Exit Nikon View by selecting Quit from the File menu in the Thumbnail List window, or by clicking the Exit button in the Image Transfer window. Drag the untitled icon on the desktop (which represents the camera) to the Trash.



Using a computer to enjoy your pictures

Pictures that have been transferred from the camera to the computer can be printed out, attached to e-mails or posted on an internet home page. Refer to page 75 of the instruction manual for further details on how to enjoy your digital pictures.

By default, pictures that have been transferred from the camera to the computer will be saved to the following folders:

[Windows]

Images will be saved to a new folder inside \Program Files\Nikon\NkView4\ Images. The folder is named according to the date and time the images were transferred to the computer.

[Macintosh]

Images will be saved to a new folder inside Nikon Software: Nikon View 4: Images. The folder is named according to the date and time the images were transferred to the computer.

Printing out your pictures at a print shop (Instruction manual, pp. 82-84)

If you have a DPOF compatible printer, you can remove the memory card from the camera and print pictures directly.

You can also take the camera's memory card along to your photofinisher, and order prints.